

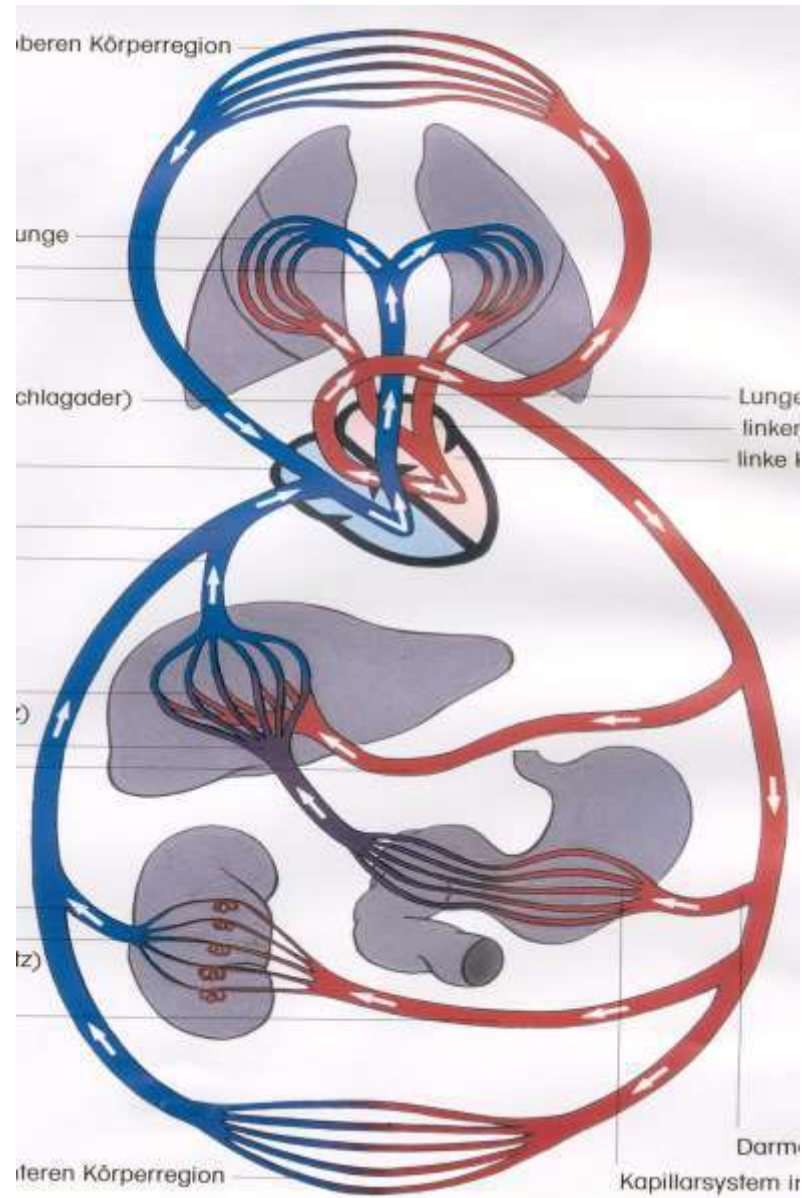
Anatomie circulatoire et cardiaque



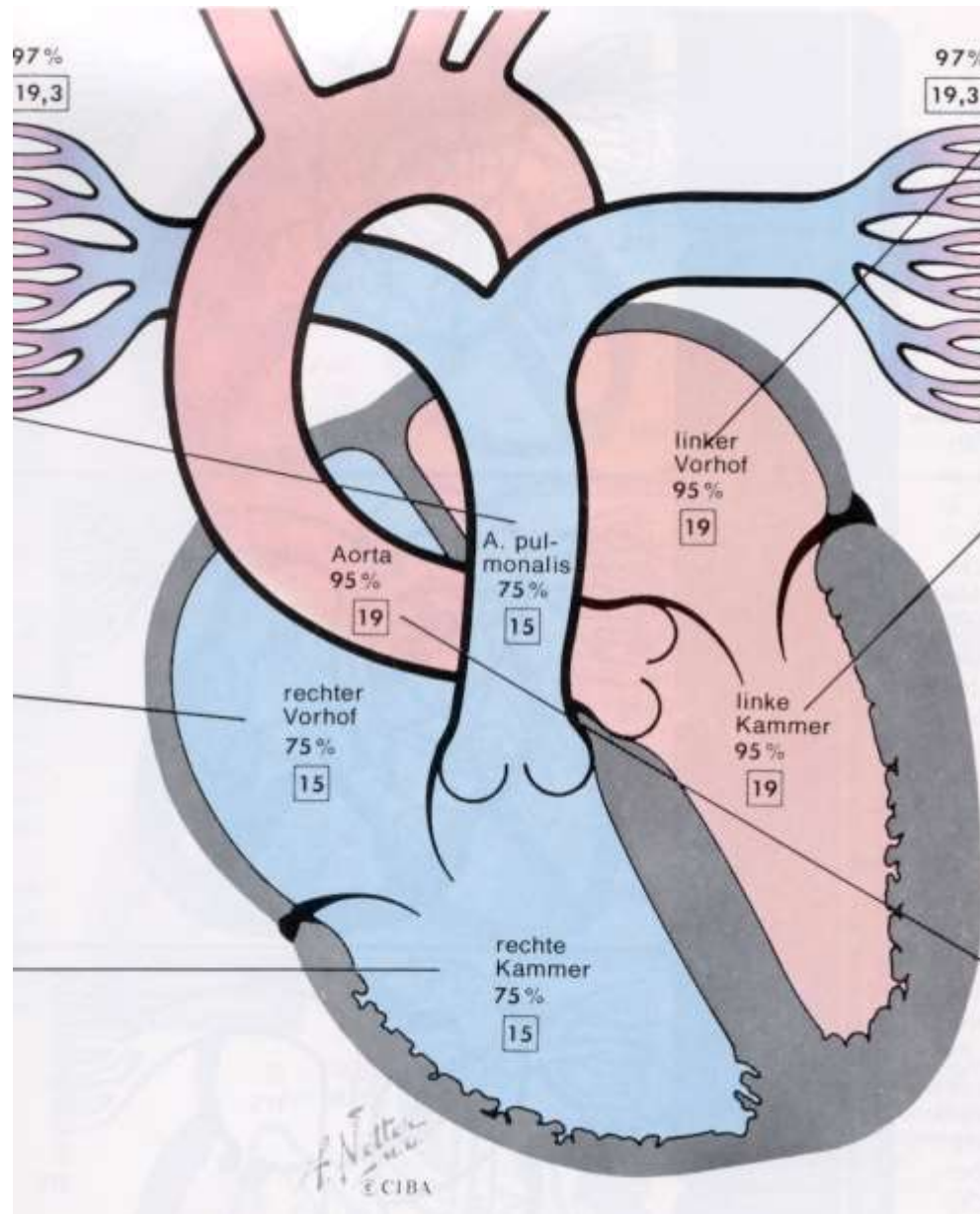
Anatomie circulatoire et cardiaque



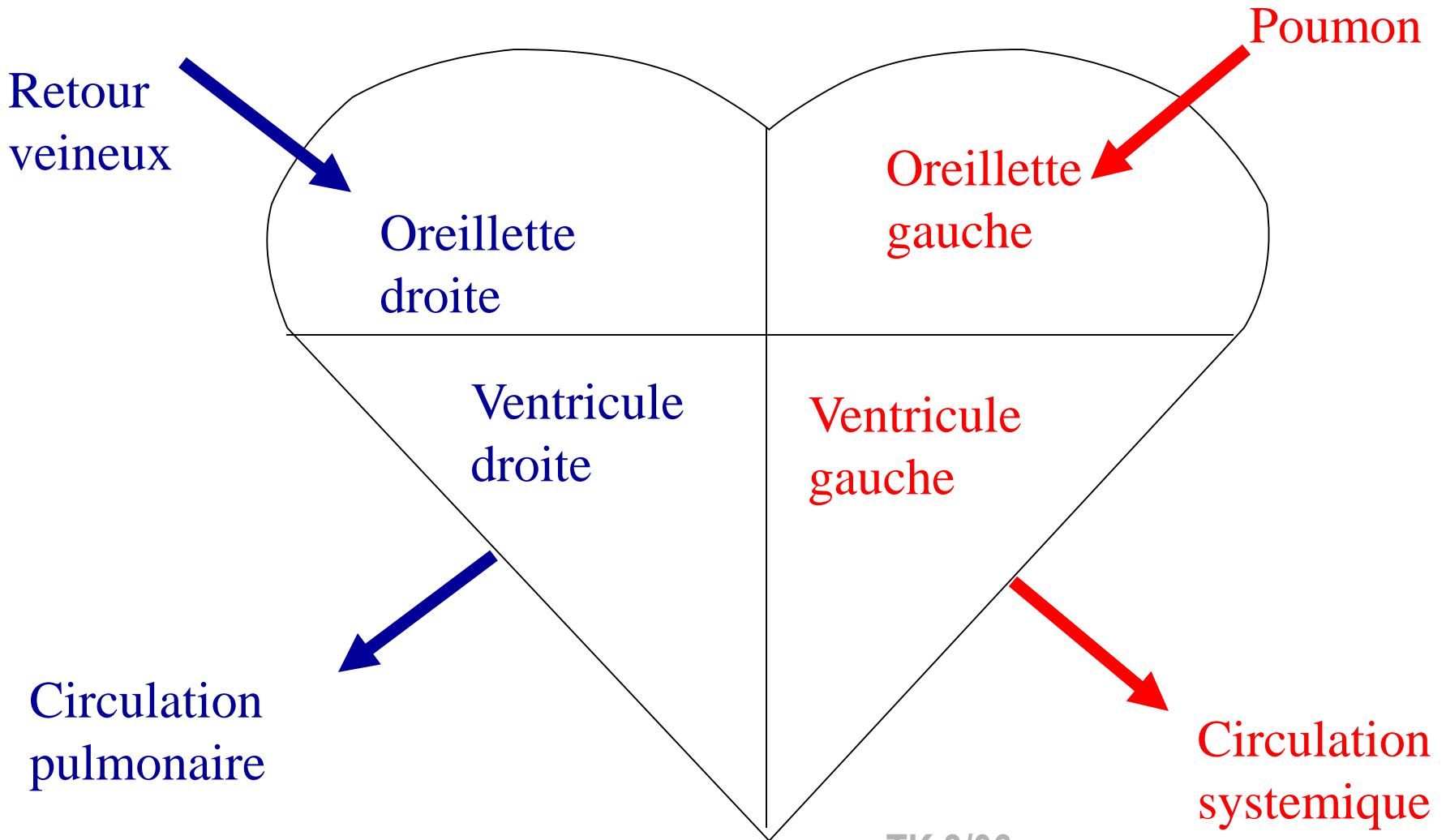
Circulation



Fonction du coeur



Anatomie circulatoire et cardiaque



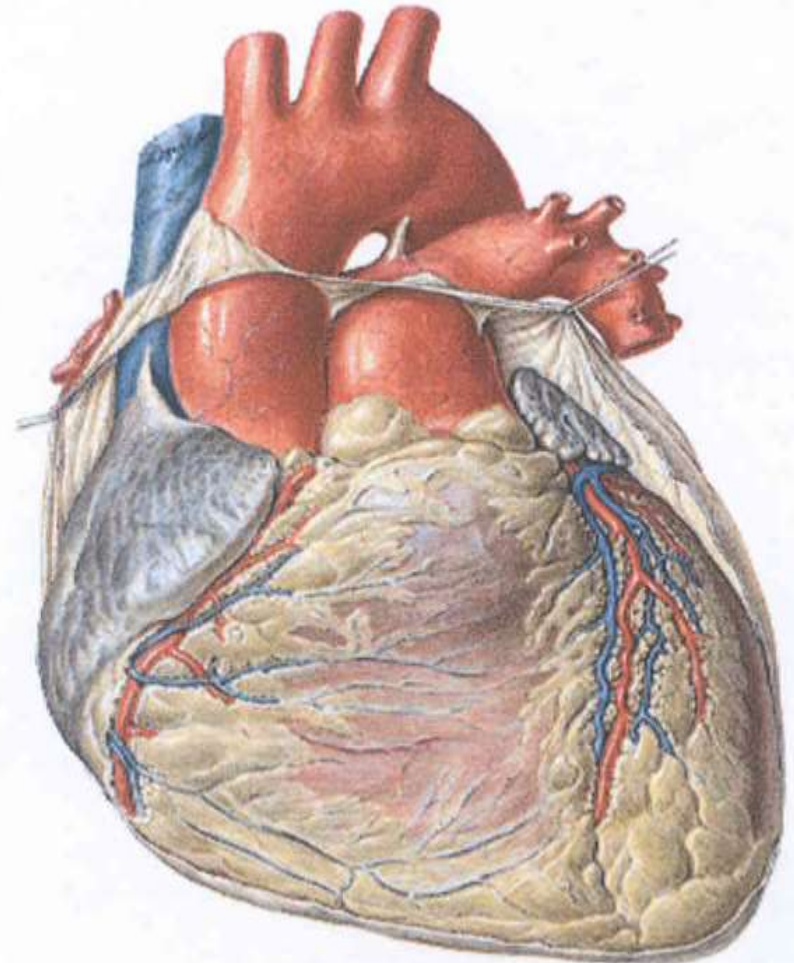
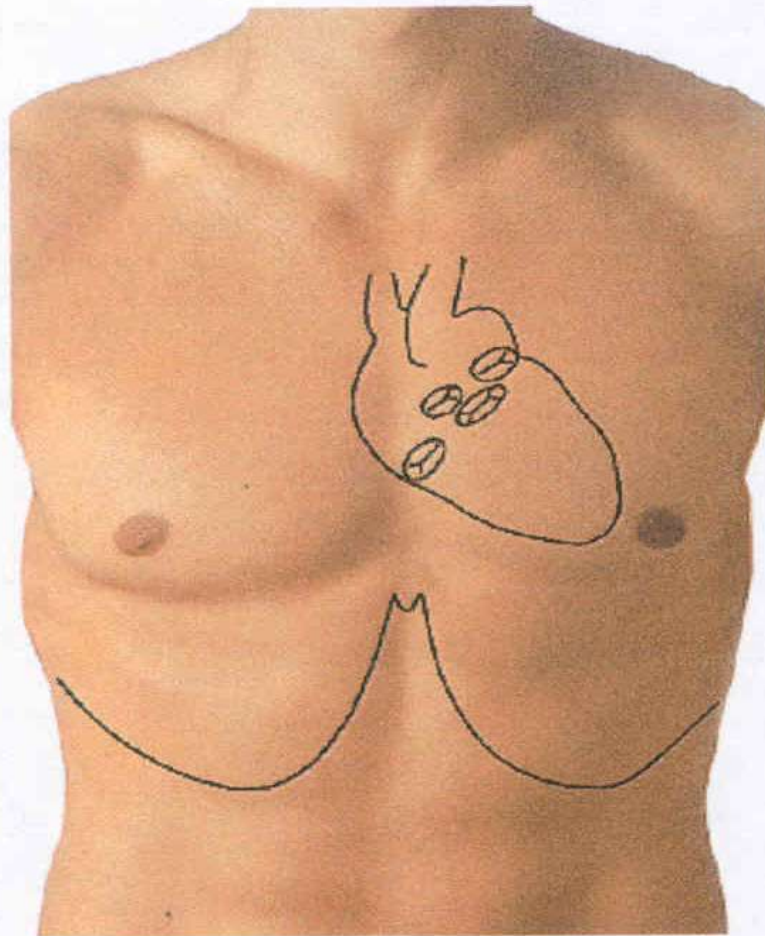
Anatomie circulatoire et cardiaque



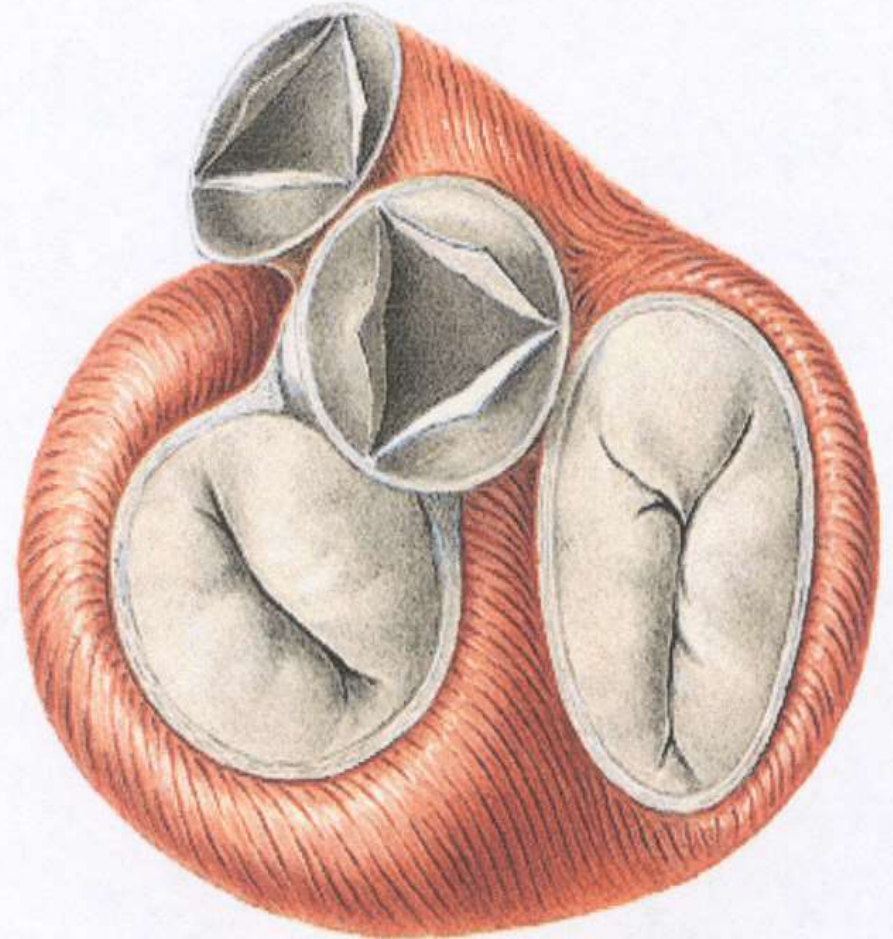
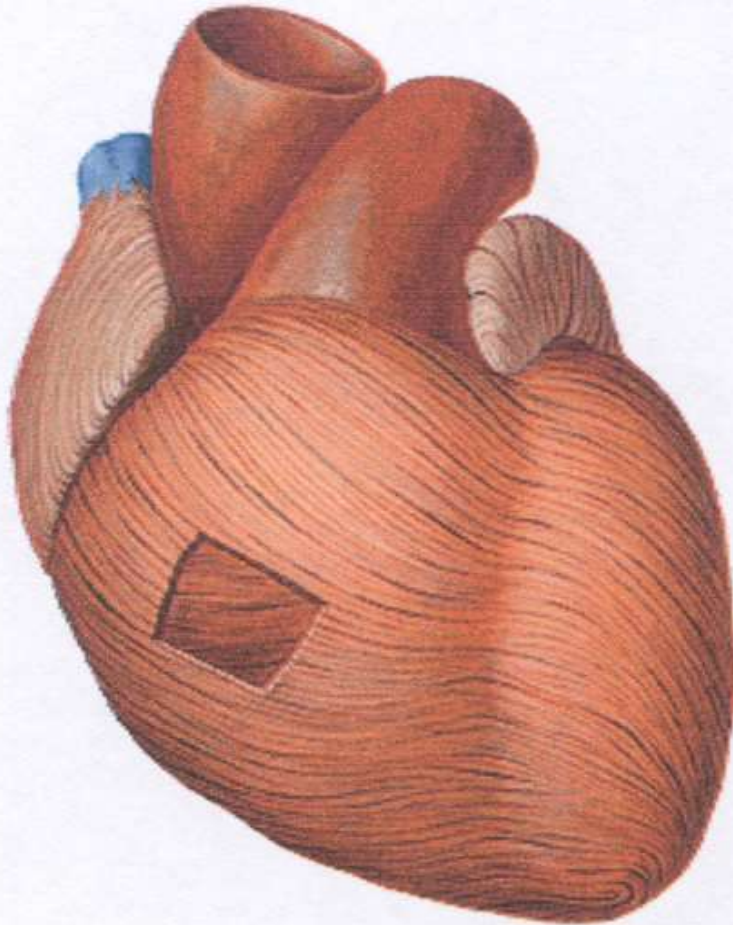
Le coeur humain:

- grandeur = un poing
- poids = 300-350g, ca. 0.5% du poids du corps
- pouls normale = 50-99/min

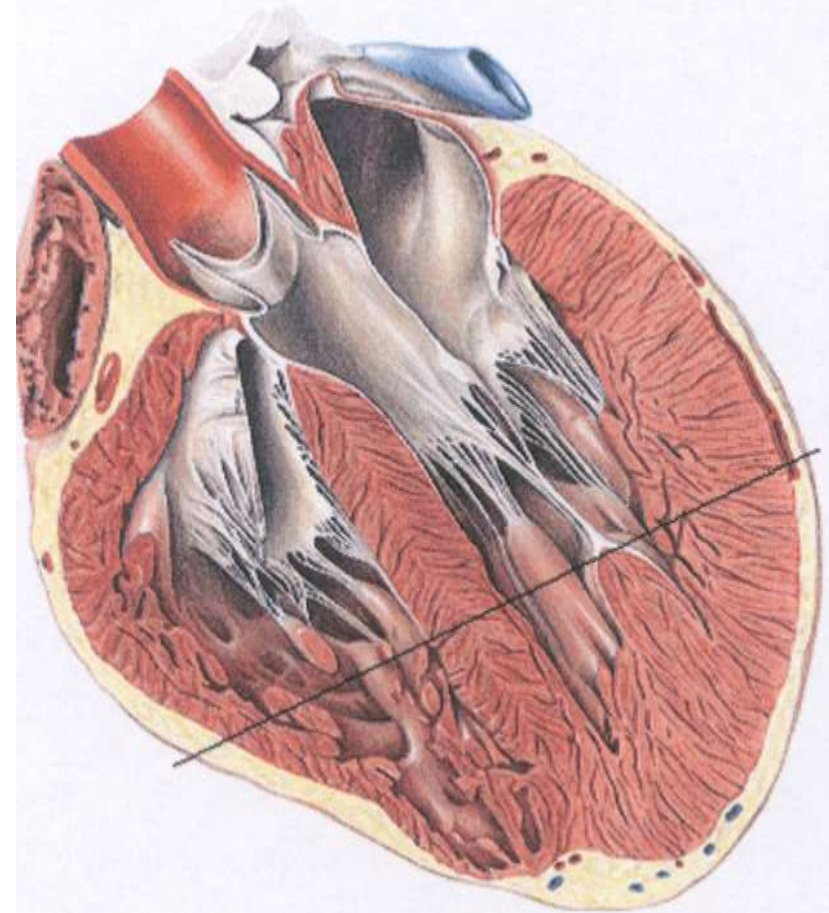
Anatomie du coeur:



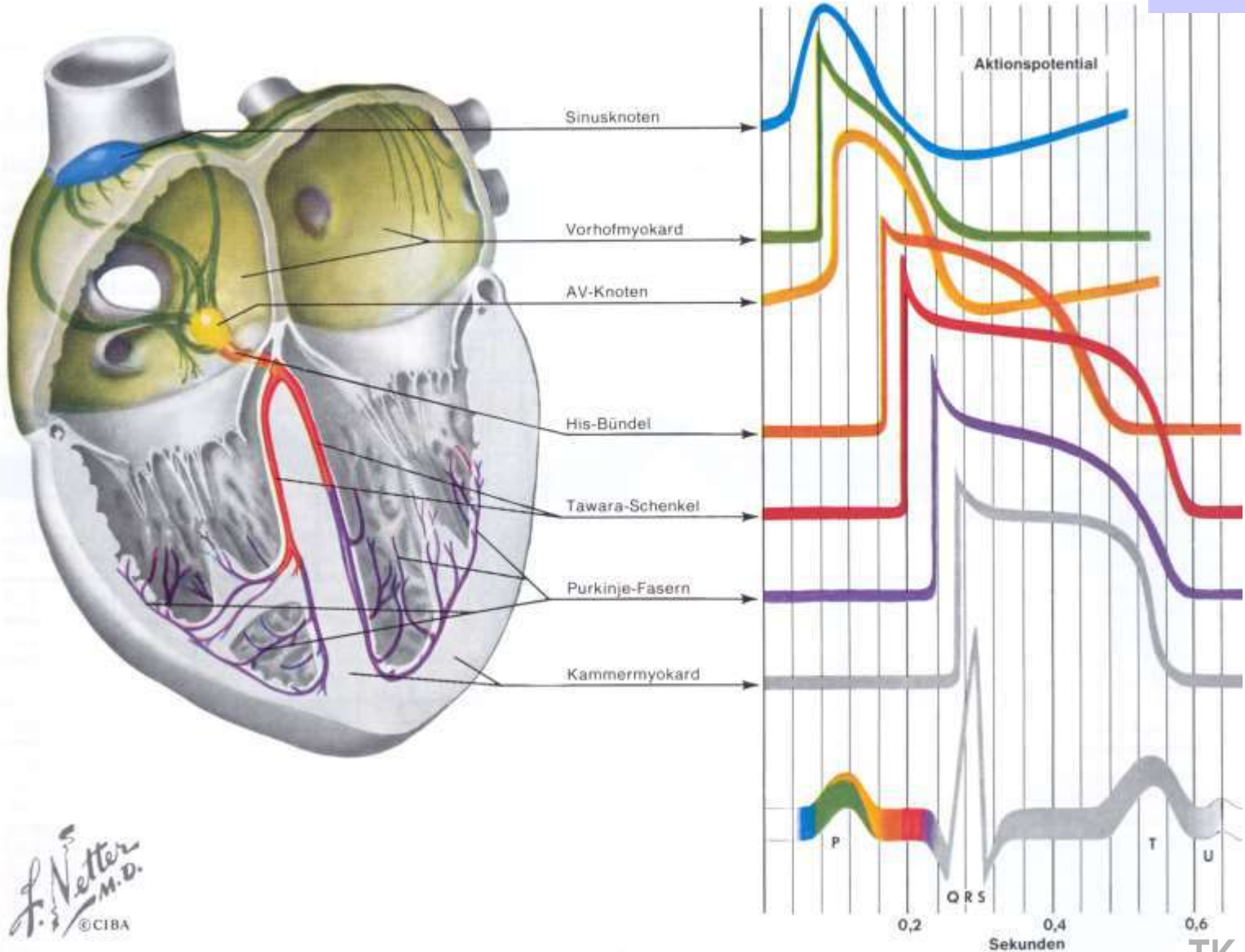
Anatomie du coeur:



Anatomie du coeur:

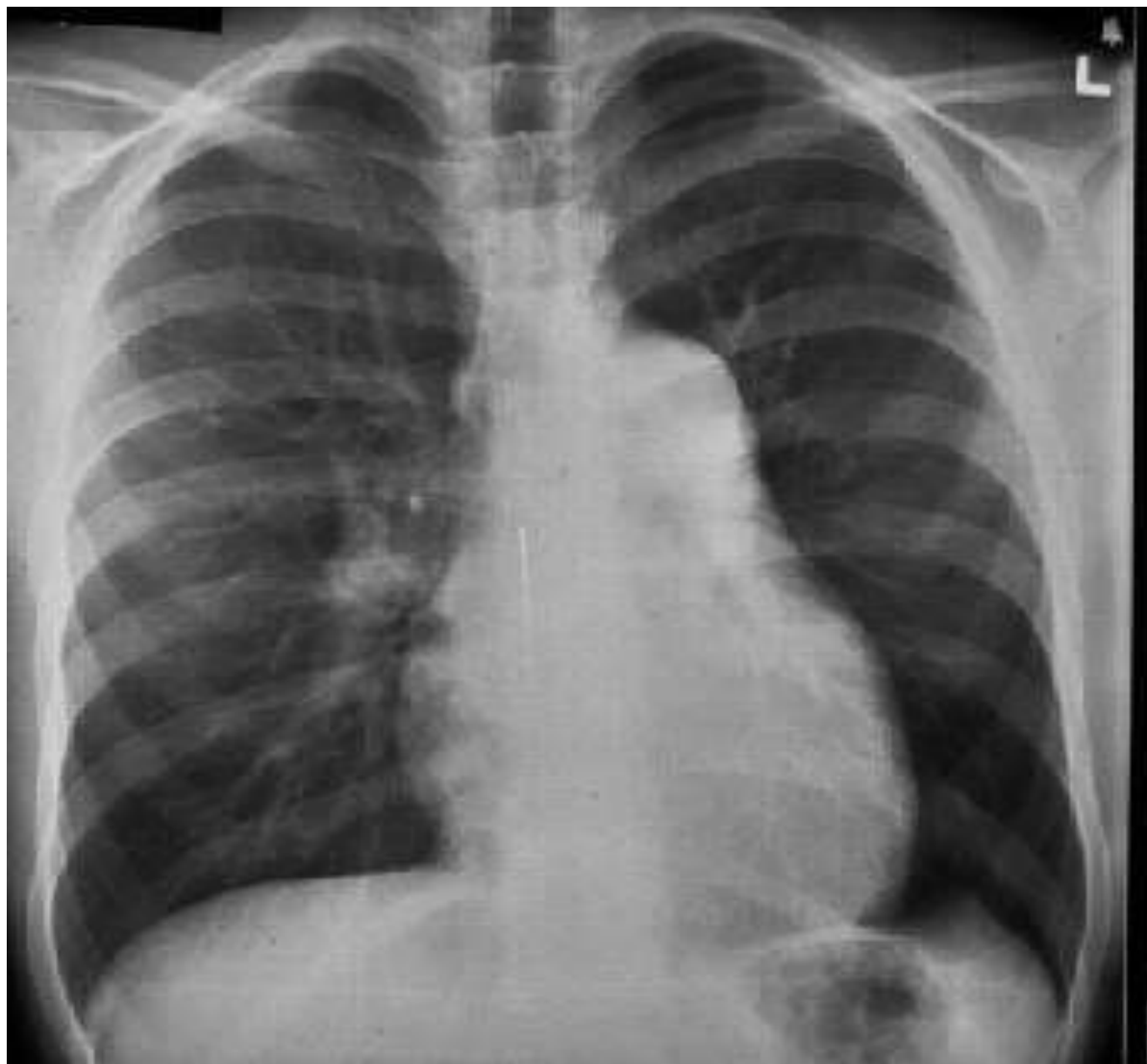


Anatomie du coeur: system de conduction (2)

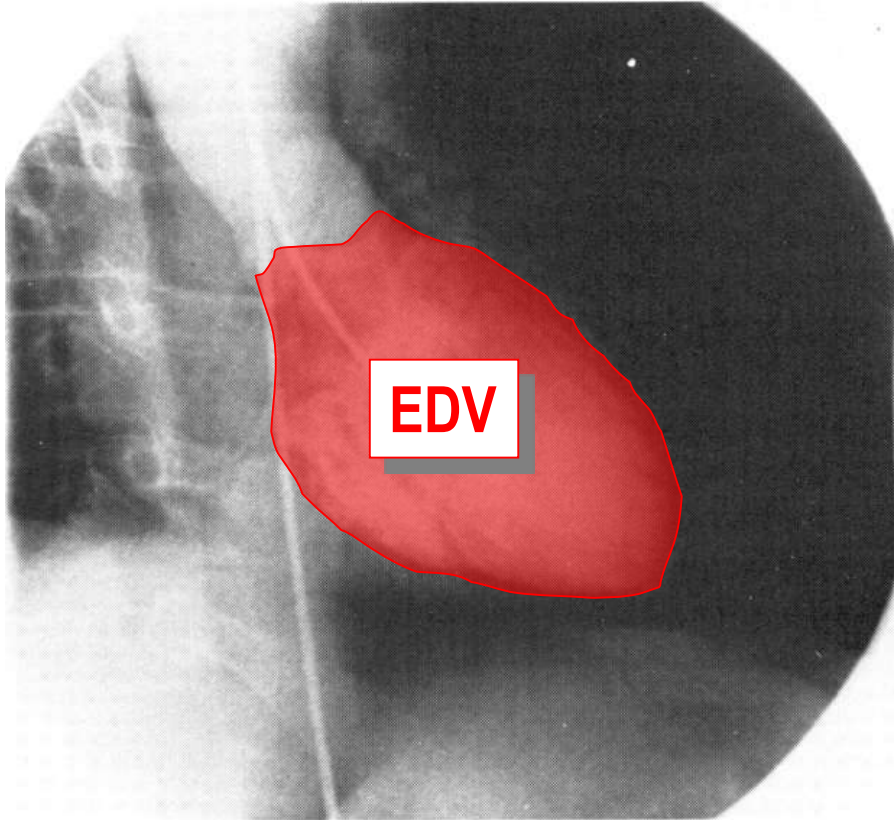


F. Netter M.D.
© CIBA

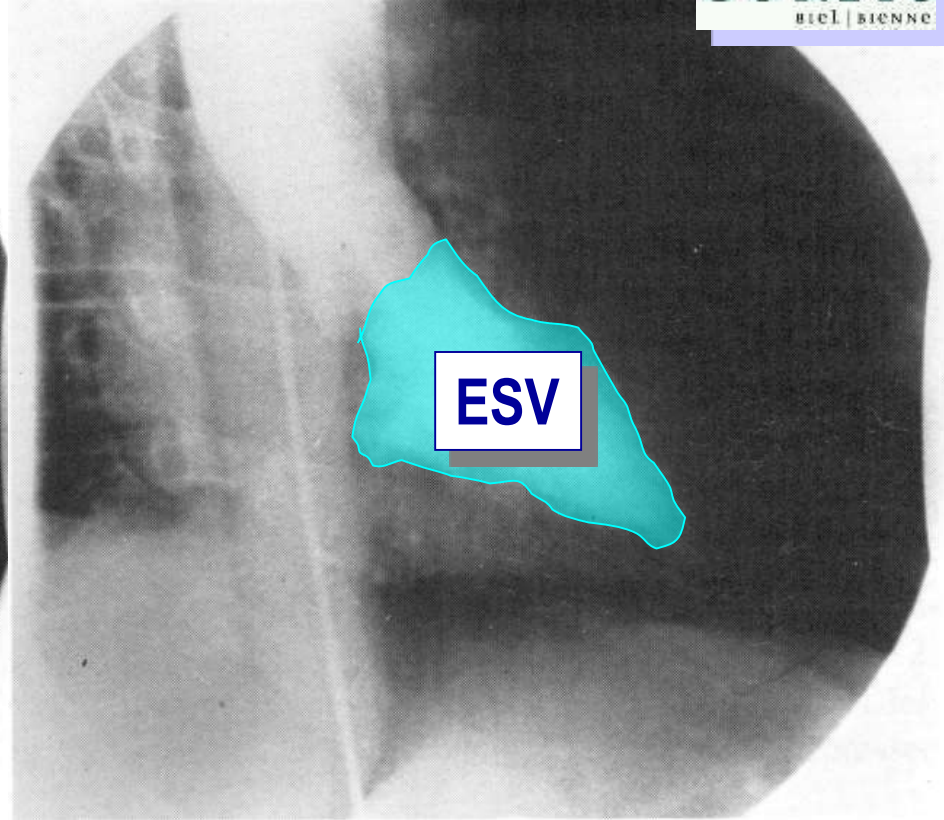
Anatomie du coeur: radiographie



Fonction du coeur



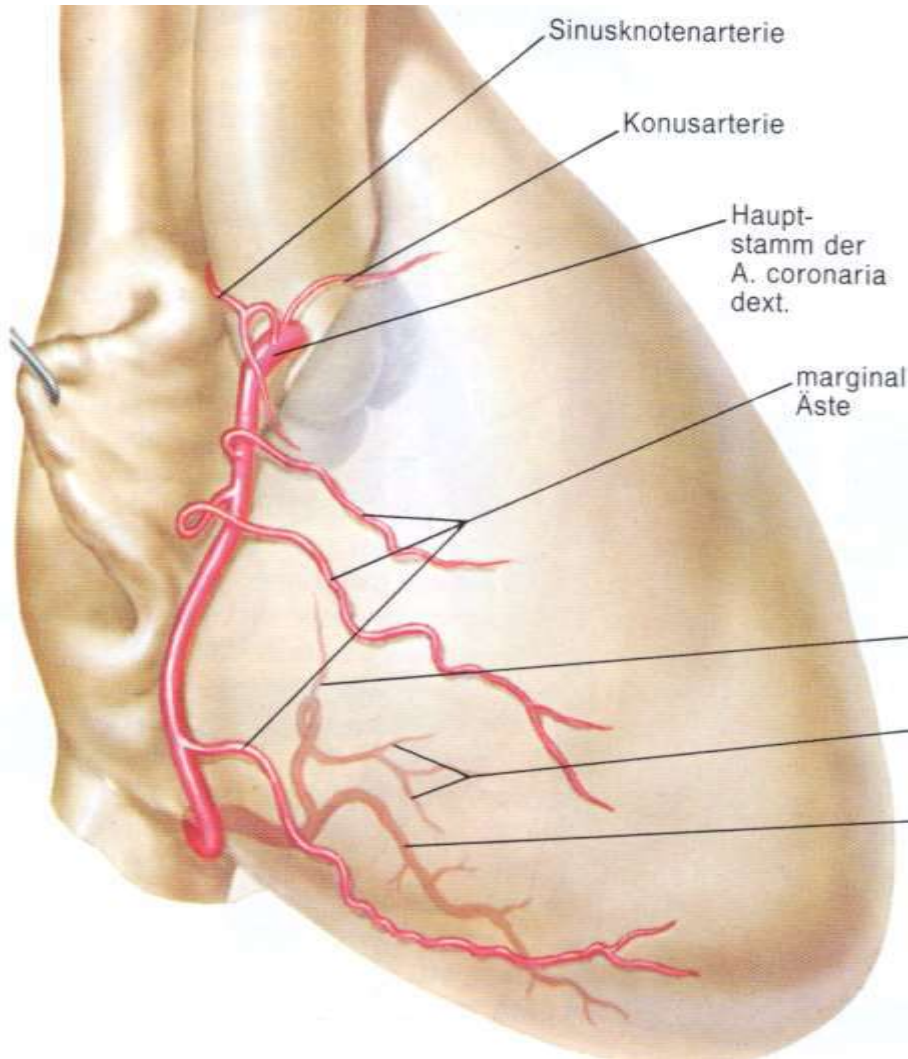
fin de la diastole



fin de la systole

$$\text{EDV} - \text{ESV} = \text{SV} (80\text{ml})$$
$$\text{SV}/\text{EDV} = \text{fraction d'éjection} (>60\%)$$

Artere coronaire droite



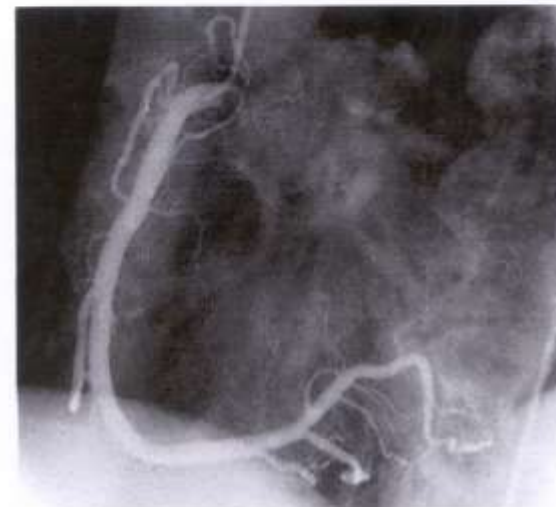
© U&S - Sobotta - Atlas - Anatomie

Abb. 840 Rechte Herzkranzarterie, A. coronaria dextra; Koronarangiographie (Röntgendarstellung nach selektiver Injektion eines Kontrastmittels); Einstellung: schräger Strahlengang von links anterior nach rechts posterior (LAO). Gleicher Patient wie in [Abb. 838](#) und [Abb. 839](#).

* Katheter in der Aorta und im Ostium der A. coronaria dextra

** Katheterschatten in der Aorta thoracica, Pars descendens

- 1: A. coronaria dextra
- 2: A. coronaria dextra, R. atrioventricularis
- 3: A. coronaria dextra, R. conus arteriosus
- 4: A. coronaria dextra, R. interventricularis posterior
- 5: A. coronaria dextra, R. marginalis dexter
- 6: A. coronaria dextra, (R. posterolateralis dexter)
- 7: Diaphragma
- 8: *
- 9: **

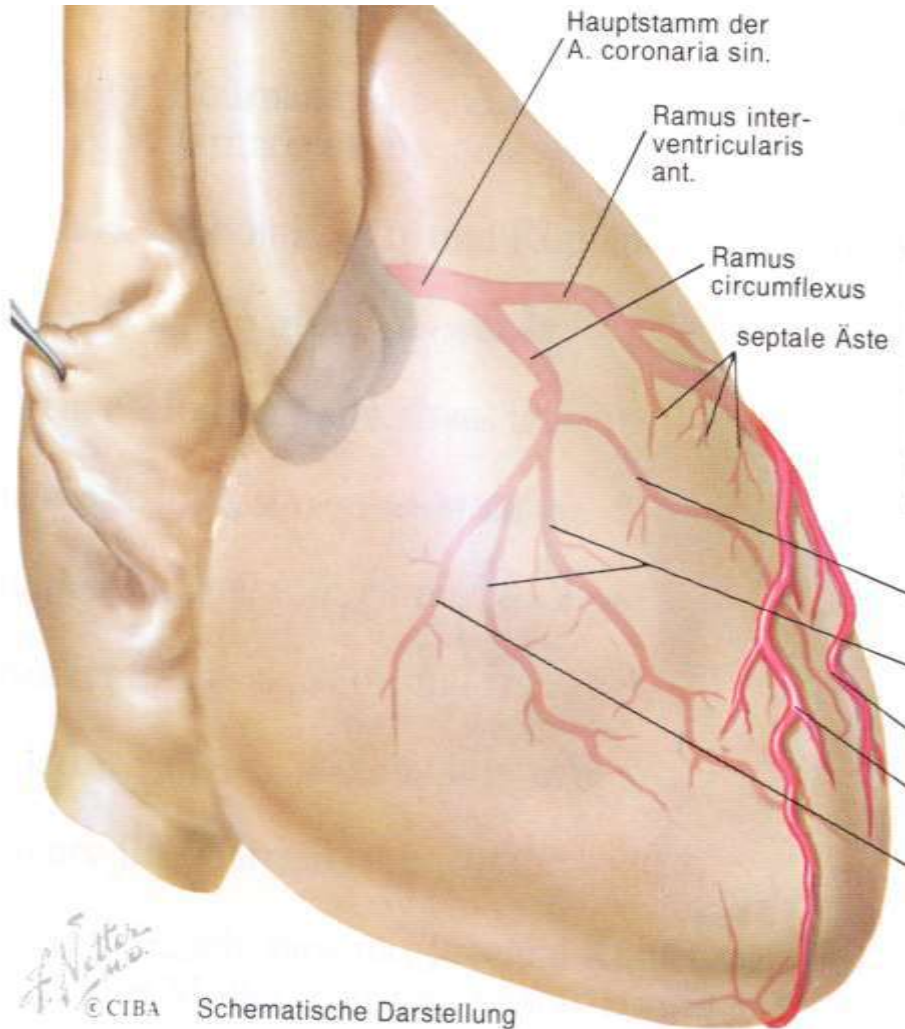
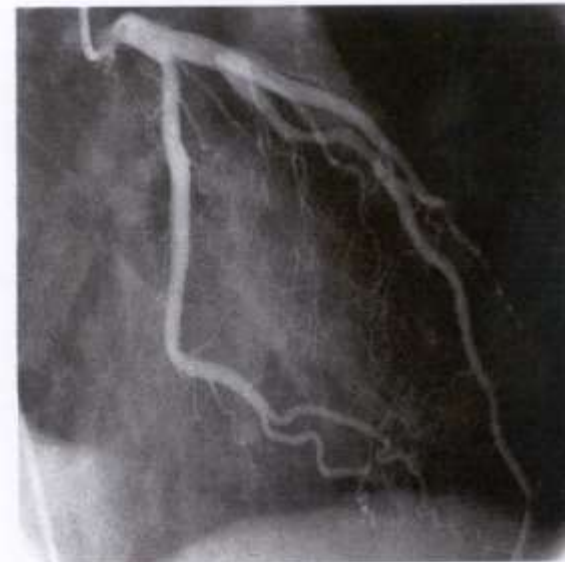


Artere coronaire gauche

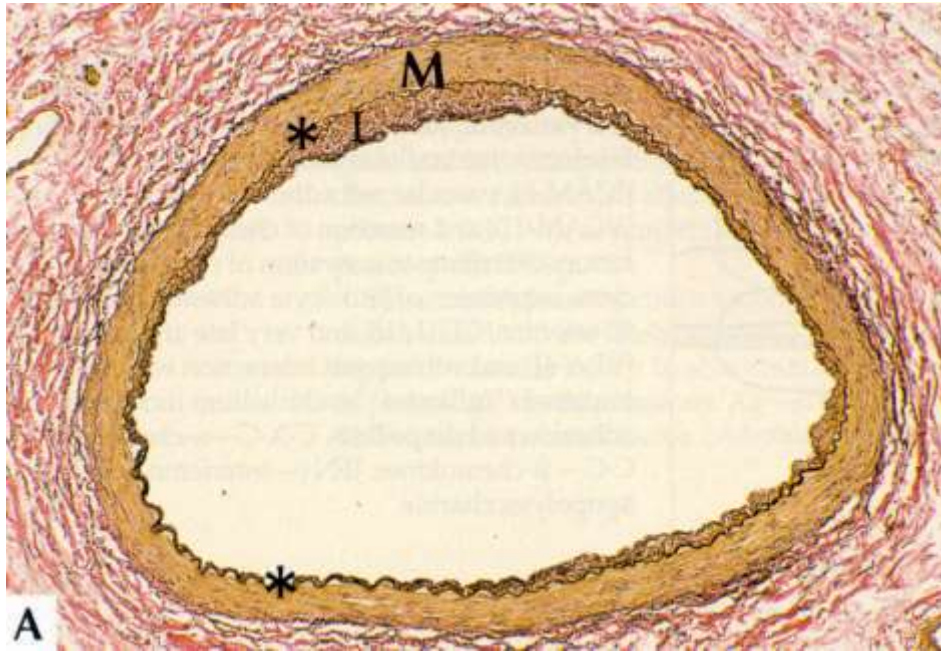
© U&S - Sobotta - Atlas - Anatomie

Abb. 838 Linke Herzkranzarterie, A. coronaria sinistra; Koronarangiographie (Röntgendarstellung nach selektiver Injektion eines Kontrastmittels); Einstellung: schräger Strahlengang von rechts anterior nach links posterior (RAO). Gleicher Patient wie in [Abb. 839](#) und [Abb. 840](#).
* Katheter in der Aorta und im Ostium der A. coronaria dextra

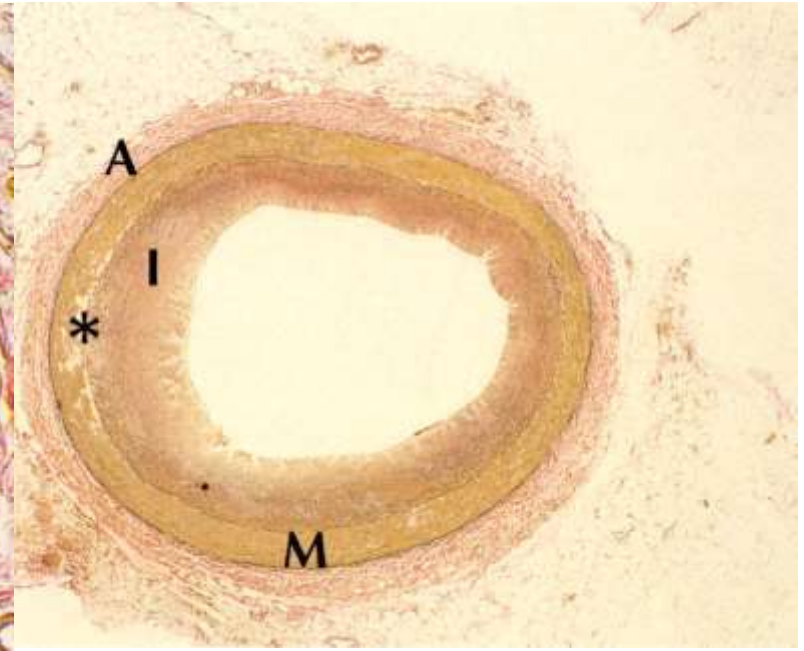
- 1: A. coronaria sinistra
- 2: A. coronaria sinistra, R. circumflexus
- 3: A. coronaria sinistra, R. interventricularis anterior
- 4: A. coronaria sinistra, R. interventricularis posterior
- 5: A. coronaria sinistra, R. marginalis sinister
- 6: A. coronaria sinistra, Rr. interventriculares septales
- 7: Diaphragma
- 8: *



Les artères coronaires

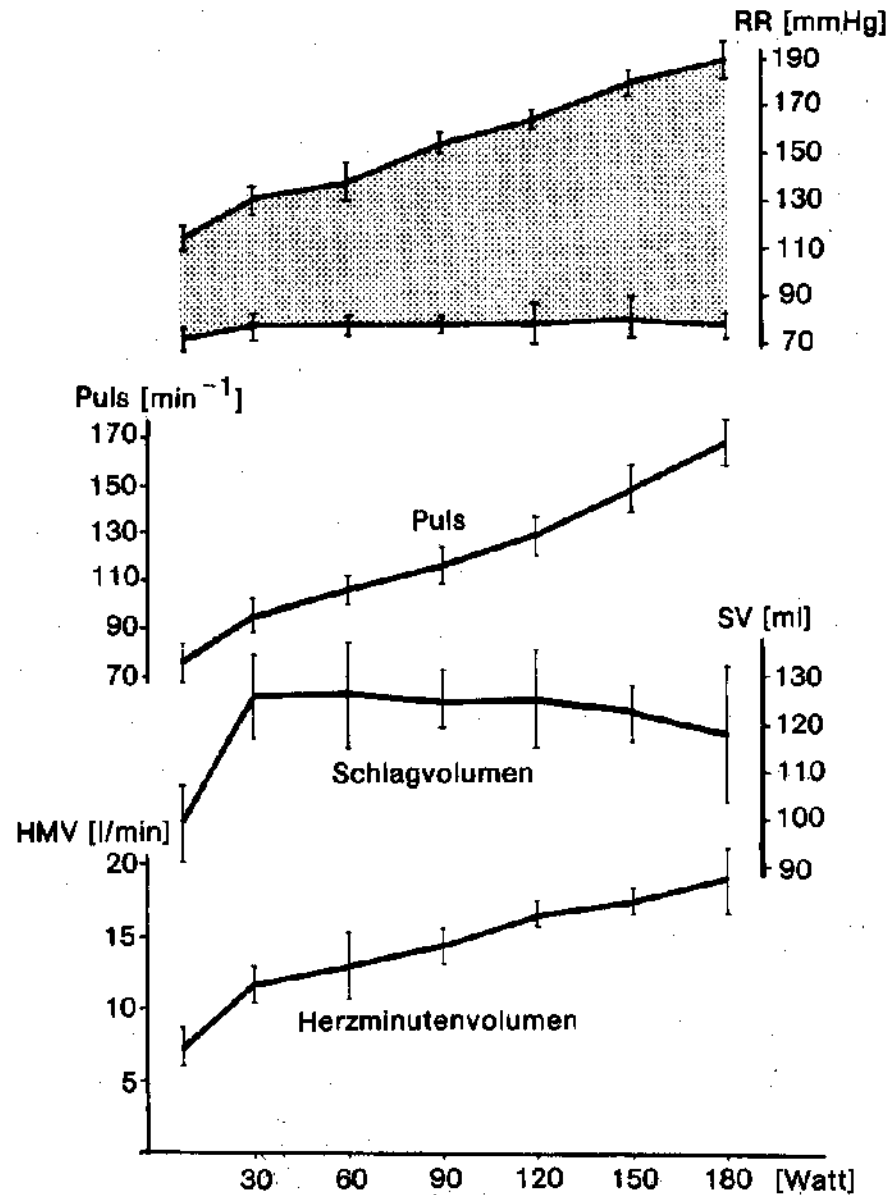


Section transversale coronaire gauche
chez une fille à 2 ans

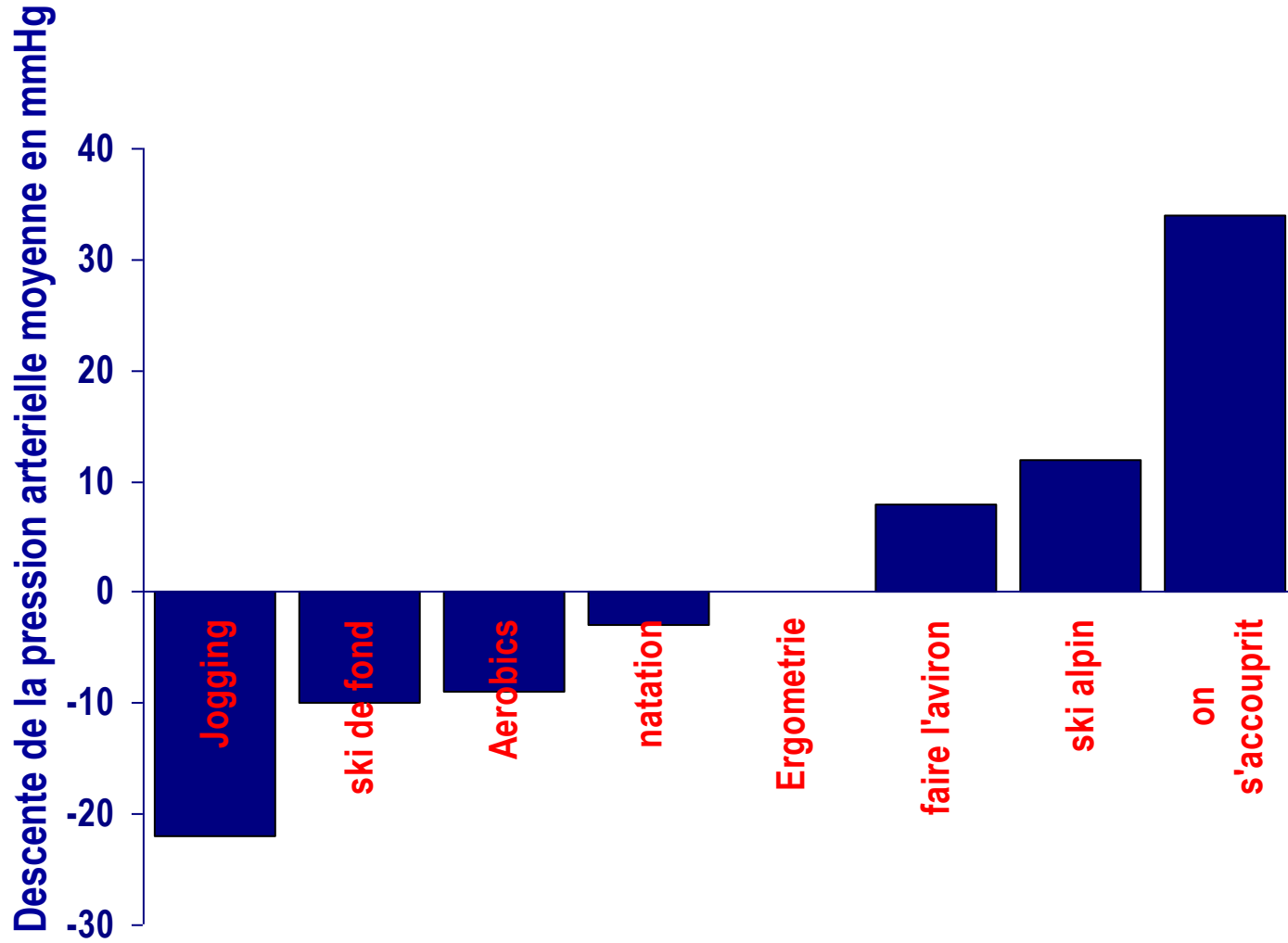


Section transversale coronaire gauche
chez un homme à 41 ans

Fonction du coeur



Fonction du coeur



Les effets du training sur la santé

